

Issue Date: 07-24-2018
Revised Date: 05-12-2026
Renewal Date: 07-31-2026

DIVISION: 05 00 00 - METALS
Section: 05 52 00 – Metal Railings

REPORT HOLDER:
Deckorators, Inc.
68956 US Highway 131
White Pigeon, MI 49099
www.deckorators.com

REPORT SUBJECT:
ALX Contemporary Guard Systems

- ALX Contemporary Round Railing
- ALX Contemporary Rectangular Railing
- ALX Contemporary Cable Railing
- Revolution Rod Railing

Rapid Rail Guardrail System
Palisade Guardrail System

1.0 SCOPE OF EVALUATION

1.1 This Research Report addresses compliance with the following Codes:

- 2024, 2021, 2018 *International Building Code*® (IBC)
- 2024, 2021, 2018 *International Residential Code*® (IRC)

NOTE: This report references the most recent Code editions cited. Section numbers in earlier editions may differ.

1.2 The ALX Contemporary. Rapid Rail, and Palisade Guard Systems have been evaluated for the following properties (see Table 1):

- Structural Performance

1.3 The ALX Contemporary. Rapid Rail, and Palisade Guard Systems have been evaluated for the following uses (see Table 1):

- Guards (aka. guardrails) under the definitions of the referenced codes.
- Guard assemblies are provided as level guards for walking areas such as decks and balconies. Sloped guards are for open sides of stairways.

2.0 STATEMENT OF COMPLIANCE

The ALX Contemporary. Rapid Rail, and Palisade Guard Systems comply with the Codes listed in Section 1.1, for the properties stated in Section 1.2 and uses stated in Section 1.3, when installed as described in this report, including the Conditions of Use stated in Section 6.0.

2.1 2024 IBC and IRC Evaluation Reports: The Intertek CCRR is an *Evaluation Report* for approval of an alternate material, design, or method of construction in accordance with Section 104.2.3.6.1 of the 2024 IBC and Section R104.2.2.6.1 of the 2024 IRC.

3.0 DESCRIPTION

3.1 Level guards are provided with rail lengths up to 96 inches in length and installed heights of 42 inches measured from the top of the upper rail to the walking surface. See Tables 2-6 for lengths and configurations.

3.2 Stair guards are provided with rail lengths up to 97 inches along the sloping length between the inside of supports and an installed height of 42 inches measured vertically from the top of the upper rail to the leading edge of the stair tread or landing.

3.3 The ALX Contemporary. Rapid Rail, and Palisade Guard Systems are an assemblage of extruded aluminum top rails, bottom rails, brackets, balusters, and posts.

3.4 The ALX Contemporary Rectangular, Cable and Revolution Rod Guard top rails are rectangular extruded aluminum profiles. See Figure 2. The ALX Contemporary Round Guard top rail is a round extruded aluminum profile. See Figure 1.

3.5 The ALX Contemporary Rectangular and Round Guard bottom rail is a square extruded aluminum profile. ALX Contemporary Cable and Revolution Rod Guard Systems do not include a bottom rail. See Figure 3.



3.6 The Rapid Rail top and bottom rails are two component rails consisting of a top and base fit together from extruded aluminum profiles. See Figure 9.

3.7 The Palisade top and bottom rails are two component rails consisting of a top and base fit together from extruded aluminum profiles. See Figures 10 and 11.

3.8 Zinc die-cast collar brackets are used for various configurations. See Figures 4, 12, 13, 15, and 16.

3.9 ALX Guard Systems infill varies by guard system and configuration. See Tables 2, 3, 4 or 5. Available infill described below and shown in Figures 5, 6, and 7.

3.9.1 Classic - aluminum 3/4-inch-diameter round pickets, fit into routing in the top and bottom rails.

3.9.2 Estate - aluminum 3/4-inch square pickets, fit into routing in the top and bottom rails.

3.9.3 Aluminum, 3/4-inch square pickets, factory welded to the top and bottom rails with a 1/8-inch continuous fillet weld.

3.9.4 Stainless steel horizontal cable infill, with intermediate 3/4-inch square pickets. Stair guard systems use two intermediate pickets and level guard systems use one intermediate picket.

3.9.5 A full-length #8-32 stainless steel threaded rod with a 1/4 in. outside diameter stainless steel rod sleeve. An intermediate baluster is required.

3.10 The Rapid Rail and Palisade Guardrail Systems use 5/8-inch square aluminum balusters, fit into routing in the top and bottom rails. See Table 6, Table 7, and Figure 14.

3.11 Posts consist of square aluminum extrusions welded to an aluminum base plate that is pre-drilled for anchoring to the supporting structure. See Figure 8.

3.11.1 The heavy wall post is a 2-1/2-inch square by 0.15-inch wall aluminum extrusion.

3.11.2 The light wall post is a 2-1/2-inch square by 0.080-inch wall aluminum extrusion.

3.11.3 The 4x4 post is a 4-inch square by 0.125-inch wall aluminum extrusion.

3.11.4 The heavy wall post and light wall post are attached to a 5-inch x 5-inch x 3/8-inch-thick aluminum base plate with a 1/4-inch continuous fillet weld. The base plates have four 3/8-inch-diameter holes for attachment to the deck surface.

3.11.5 The 4x4 post is attached to a 6-1/2-inch x 6-1/2-inch x 1/2-inch-thick aluminum base plate with a 3/16-inch continuous fillet weld. The base plate has four 5/8-inch-diameter holes for attachment to the deck surface

4.0 PERFORMANCE CHARACTERISTICS

4.1 The guard systems described in this report have demonstrated capacity to resist design loading specified in Chapter 16 of the IBC and Section R301 of the IRC when tested in accordance with ICC-ES AC 273.

5.0 INSTALLATION

5.1 The ALX Contemporary and Rapid Rail Guard Systems must be installed in accordance with the manufacturer's published installation instructions, the applicable Code, and this Research Report. A copy of the manufacturer's instructions must be available on the jobsite during installation.

5.2 Guards may be assembled in various configurations identified in Tables 2-7. Refer to Tables 8-13 for the fastening schedule of all system components.

5.3 Posts are anchored to with (4) minimum 3/8" bolts of the type and size suitable for the construction type and condition of the supporting structure. See Section 6.3 under Conditions of Use for additional requirements.

6.0 CONDITIONS OF USE

6.1 Installation must comply with this Research Report, the manufacturer's published installation instructions, and the applicable Code. In the event of a conflict, this report governs.

6.2 Only those types of fasteners and fastening methods described in this report have been evaluated for the





installation of ALX Contemporary and Rapid Rail Guard Systems. Other methods of attachment are outside the scope of this report.

6.3 Anchorage of the structural post is not within the scope of this report and is subject to evaluation and approval by the building official. Anchors must satisfy the design load requirements specified in Chapter 16 of the building code and must meet the following minimum requirements:

6.3.1 A minimum of four anchor bolts must be used and located in the four pre-drilled holes in the structural post base plate.

6.3.2 The anchors must have a minimum nominal diameter of 3/8 inch.

6.3.3 Where required by the building official, engineering calculations and details shall be provided. The calculations verify that the anchorage and supporting structure complies with the building code for the type and condition of the supporting structure.

6.4 The ALX Contemporary, Rapid Rail, and Palisade Guard Systems are manufactured under an approved quality control system with third-party inspections by Intertek.

7.0 SUPPORTING EVIDENCE

7.1 Drawings and installation instructions submitted by the manufacturer.

7.2 Reports of testing and engineering analysis demonstrating compliance with the performance requirements of Acceptance Criteria for Handrails and Guards ICC-ES AC273, revised June 2017.

7.3 Documentation of an Intertek approved quality control system for the manufacturing of products recognized in this report.

7.4 Intertek Listing Reports "[Deckorators, Inc - ALX Contemporary Guardrail Systems](#)", "[Deckorators, Inc - Rapid Rail Guardrail Systems](#)", and "Deckorators, Inc. - Palisade Guardrail Systems" on the [Intertek Directory of Building Products](#).

8.0 IDENTIFICATION

The ALX Contemporary and Rapid Rail Guard Systems are identified with the manufacturer's name (Deckorators, Inc.), the product name (ALX Contemporary Guard Systems, Rapid Rail Guardrail Systems, or Palisade Guardrail Systems), when applicable "For Use in One-and Two-Family Dwellings Only", the Intertek Mark as shown below, the Intertek Control Number, and the Code Compliance Research Report number (CCRR-0280).



9.0 OTHER CODES

This section is not applicable.

10.0 CODE COMPLIANCE RESEARCH REPORT USE

10.1 Approval of building products and/or materials can only be granted by a building official having legal authority in the specific jurisdiction where approval is sought.

10.2 Code Compliance Research Reports shall not be used in any manner that implies an endorsement of the product by Intertek.

10.3 Reference to the <https://bpdirectory.intertek.com> is recommended to ascertain the current version and status of this report





TABLE 1: PROPERTIES EVALUATED

PROPERTY	2024 IBC SECTION	2024 IRC SECTION
Guard Structural Performance	1607.9.1	Table R301.5

TABLE 2: CODE OCCUPANCY CLASSIFICATION – ALX CONTEMPORARY ROUND RAILING

GUARD TYPE	MAXIMUM DIMENSIONS ⁽¹⁾	INFILL	SUPPORT POST	SUPPORT BLOCK	CODE OCCUPANCY CLASSIFICATION
Level / In-Line Application	97 in. by 42 in.	3/4 in Diameter Round Hollow Aluminum Picket	Heavy Wall 4x4 Post	Two, 3 in. long sections of 3/4 in. dia. round picket	IRC - One- and Two-Family Dwellings
Stair Application	75.5 in. by 42 in.		Heavy Wall Light Wall ⁽²⁾ 4x4 Post		IRC - One- and Two-Family Dwellings IBC – All Use Groups

⁽¹⁾ Guardrails are qualified up to and included the listed maximum guardrail system dimensions for use in the referenced Code Occupancy Classification. Guardrail lengths are actual railings lengths, i.e. clear space between supports for level rails and sloping length of rail between supports for stair rails.

⁽²⁾ Light Wall post is limited to use in IRC One- and Two-family Dwelling applications with a maximum rail height of 36 inches.

This Code Compliance Research Report (“Report”) is for the exclusive use of Intertek’s Client and is provided pursuant to the agreement between Intertek and its Client. Intertek’s responsibility and liability are limited to the terms and conditions of the agreement. Intertek assumes no liability to any party, other than to the Client in accordance with the agreement, for any loss, expense or damage occasioned by the use of this Report. Only the Client is authorized to permit copying or distribution of this Report and then only in its entirety, and the Client shall not use the Report in a misleading manner. Client further agrees and understands that reliance upon the Report is limited to the representations made therein. The Report is not an endorsement or recommendation for use of the subject and/or product described herein. This Report is not the Intertek Listing Report covering the subject product and utilized for Intertek Certification and this Report does not represent authorization for the use of any Intertek certification marks. Any use of the Intertek name or one of its marks for the sale or advertisement of the tested material, product or service must first be approved in writing by Intertek.





TABLE 3: CODE OCCUPANCY CLASSIFICATION – ALX CONTEMPORARY RECTANGULAR RAILING

GUARD TYPE	MAXIMUM DIMENSIONS ⁽¹⁾	INFILL	SUPPORT POST	SUPPORT BLOCK	CODE OCCUPANCY CLASSIFICATION
Level / In-Line Application One-Piece Bracket	73 in. by 36 in. ⁽²⁾	3/4 in Square Hollow Aluminum Picket	Light Wall 4x4 Post	Two, 3 in. long sections of 3/4 in. square picket	IRC - One- and Two-Family Dwellings
	93.5 in. by 42 in. ⁽²⁾		Heavy Wall 4x4 Post		
	93.5 in. by 42 in.	Welded 3/4 in Square Hollow Aluminum Picket	Heavy Wall 4x4 Post	One, 3 in. long section of 3/4 in. square picket	IRC - One- and Two-Family Dwellings
	70.5 in. by 42 in.			None	IBC - All Use Groups
Level / In-Line Application Two-Piece Bracket	69.5 in. by 42 in.	Welded 3/4 in Square Hollow Aluminum Picket	Heavy Wall Light Wall ⁽³⁾ 4x4 Post	None	IRC – One- and Two-Family Dwellings
	69.5 in. by 42 in.	3/4 in Square Hollow Aluminum Picket		One, 3 in. long section of 3/4 in. square picket	
	87 in. by 42 in.	Or		Two, 3 in. long sections of 3/4 in. square picket	
	93.5 in. by 42 in.	Welded 3/4 in Square Hollow Aluminum Picket		One, 3 in. long section of 3/4 in. square picket	IRC – One- and Two-Family Dwellings
Level Over-The-Post Brackets	93 in. by 36 in.	3/4 in Square Hollow Aluminum Picket	Light Wall 4x4 Post	Two, 3 in. long sections of 3/4 in. square picket	IRC - One- and Two-Family Dwellings
Stair Application One-Piece Bracket	97 in. by 42 in.	3/4 in Square Hollow Aluminum Picket	Heavy Wall 4x4 Post	Two, 3 in. long sections of 3/4 in. square picket	IRC - One- and Two-Family Dwellings
		3/4 in Diameter Round Hollow Aluminum Picket	Heavy Wall 4x4 Post	Two, 3 in. long sections of 3/4 in. dia. round picket	
	85.3 in. by 42 in.	3/4 in Square Hollow Aluminum Picket	Heavy Wall 4x4 Post	Two, 3 in. long sections of 3/4 in. square picket	IRC - One- and Two-Family Dwellings
	75.5 in. by 42 in.		Heavy Wall Light Wall ⁽³⁾ 4x4 Post		IBC - All Use Groups
Stair Over-The-Post Brackets	96 in. by 42 in.	3/4 in Square Hollow Aluminum Picket	Light Wall 4x4 Post	Two, 3 in. long sections of 3/4 in. square picket	IRC - One- and Two-Family Dwellings

⁽¹⁾ Guardrails are qualified up to and included the listed maximum guardrail system dimensions for use in the referenced Code Occupancy Classification. Guardrail lengths are actual railings lengths, i.e. clear space between supports for level rails and sloping length of rail between supports for stair rails.

⁽²⁾ The usage of the angular brackets for 22° to 45° post to rail installation is limited to these assemblies.

⁽³⁾ Light Wall post is limited to use in IRC One- and Two-family Dwelling applications with a maximum rail height of 36 inches.





TABLE 4: CODE OCCUPANCY CLASSIFICATION – ALX CONTEMPORARY CABLE RAILING

GUARD TYPE	MAXIMUM DIMENSIONS ⁽¹⁾	INFILL	SUPPORT POST	CABLE SPACER SUPPORT BLOCK	CODE OCCUPANCY CLASSIFICATION
Level / In-Line Application One-Piece Bracket	93.5 in. by 42 in.	12 horizontal 1/8 in Diameter 1x19 stainless steel cables equidistant between the top rail and deck surface. One intermediate 3/4 inch square aluminum picket at the midspan is utilized.	Heavy Wall 4x4 Post	One Under Top Rail	IRC - One- and Two-Family Dwellings
	90.5 in. by 42 in.				IRC - One- and Two-Family Dwellings
					IBC – All Use Groups
Level / In-Line Application Two-Piece Bracket	93.5 in. by 42 in.		Heavy Wall Light Wall ⁽²⁾ 4x4 Post	One Under Top Rail	IRC – One- and Two-Family Dwellings
	87 in. by 42 in.				IRC – One and Two-Family Dwellings
	69.5 in. by 42 in.				IBC – All Use Groups.
Level Over-The-Post Brackets	91 in. by 42 in.	12 horizontal 1/8 in Diameter 1x19 stainless steel cables equidistant between the top rail and deck surface. Two intermediate 3/4 inch square aluminum picket at the midspan is utilized.	Heavy Wall 4x4 Post	Two Under Top Rail	IRC - One- and Two-Family Dwellings
	88 in. by 42 in.				IRC - One- and Two-Family Dwellings
Stair Application	96 in. by 42 in.		Heavy Wall 4x4 Post	Two Under Top Rail	IRC - One- and Two-Family Dwellings
	86.6 in. by 42 in.				IRC - One- and Two-Family Dwellings
Stair Over-The-Post Brackets	89 in. by 42 in.		Heavy Wall 4x4 Post	Two Under Top Rail	IRC - One- and Two-Family Dwellings
	83 in. by 42 in.				IRC - One- and Two-Family Dwellings
				IBC – All Use Groups	

⁽¹⁾ Guardrails are qualified up to and included the listed maximum guardrail system dimensions for use in the referenced Code Occupancy Classification. Guardrail lengths are actual railings lengths, i.e. clear space between supports for level rails and sloping length of rail between supports for stair rails.

⁽²⁾ Light Wall post is limited to use in IRC One- and Two-family Dwelling applications with a maximum rail height of 36 inches.





TABLE 5: CODE OCCUPANCY CLASSIFICATION – REVOLUTION ROD RAILING

GUARD TYPE	MAXIMUM DIMENSIONS ⁽¹⁾	INFILL	SUPPORT POST	ROD SPACER SUPPORT BLOCK	CODE OCCUPANCY CLASSIFICATION
Level / In-Line Application	68 in. by 36 in.	Full-length horizontal pickets each of #8-32 stainless steel threaded rod and 1/4" OD hollow stainless steel sleeve.	Light Wall Heavy Wall 4x4 Post	One Under Top Rail	IRC - One- and Two-Family Dwellings
Stair Application					

⁽¹⁾ Guardrails are qualified up to and included the listed maximum guardrail system dimensions for use in the referenced Code Occupancy Classification. Guardrail lengths are actual railings lengths, i.e. clear space between supports for level rails and sloping length of rail between supports for stair rails.

TABLE 6: CODE OCCUPANCY CLASSIFICATION – RAPID RAIL

GUARD TYPE	GUARDRAIL DIMENSIONS ⁽¹⁾	INFILL	SUPPORT POST	SUPPORT BLOCK	CODE OCCUPANCY CLASSIFICATION
Level/In-Line	93.5 in. x 42 in.	5/8-in. Square Hollow Aluminum Baluster	Light Wall ⁽²⁾ Heavy Wall 4x4 Post	Two, 3 in. long sections of ¾ in. square picket	IRC – One- and Two-Family Dwellings
	69.5 in. x 36 in.			One, 3 in. long section of ¾ in. square picket	
Stair	92.5 in. x 42 in.			Two, 3 in. long sections of ¾ in. square picket	
	72 in. x 36 in.			One, 3 in. long section of ¾ in. square picket	
Continuous Stair ⁽³⁾	89.5 in. x 42 in.		Light Wall ⁽²⁾ Heavy Wall	Two, 3 in. long sections of ¾ in. square picket	
Level/In-line	69.5 in. x 42 in.	5/8-in. Square Hollow Aluminum Baluster	Light Wall ⁽²⁾ Heavy Wall 4x4 Post	One, 3 in. long section of ¾ in. square picket	IRC - One- and Two-Family Dwellings IBC – All Use Groups.
Stair	72 in. x 42 in.		Light Wall ⁽²⁾ Heavy Wall		
Continuous Stair ⁽³⁾	72 in. x 42 in.				

⁽¹⁾ Guardrails are qualified up to and included the listed maximum guardrail system dimensions for use in the referenced Code Occupancy Classification. Guardrail lengths are actual railings lengths, i.e. clear space between supports/posts for level rails, sloping length of rail between supports/posts for stair rails, and sloping length of rail between brackets for continuous stair rails.

⁽²⁾ Light Wall post is limited to use in IRC One- and Two-family Dwelling applications with a maximum rail height of 36 inches.

⁽³⁾ Continuous Stair guard is comprised of two or more rail spans with Continuous Stair Brackets (Figure 13) at intermediate posts and standard Rapid Rail Brackets (Figure 10) at end posts.





TABLE 7 – CODE OCCUPANCY CLASSIFICATION – PALISADE

GUARD TYPE	GUARDRAIL DIMENSIONS ⁽¹⁾	INFILL	SUPPORT POST	SUPPORT BLOCK	CODE OCCUPANCY CLASSIFICATION
Level/In-line	92-7/8 in. x 42 in.	5/8-in. Square Hollow Aluminum Baluster	Light Wall ⁽²⁾ Heavy Wall 4x4 Post	Two, 3.5 in. long section of 3/4 in. square picket	IRC - One- and Two-Family Dwellings
	68-7/8 in. x 42 in.			One, 3.5 in. long section of 3/4 in. square picket	IRC - One- and Two-Family Dwellings IBC – All Use Groups.
Stair	69-1/2 in. x 42 in.		Light Wall ⁽²⁾ Heavy Wall 4x4 Posts	One, 3.5 in. long section of 3/4 in. square picket	IRC - One- and Two-Family Dwellings IBC – All Use Groups.

⁽¹⁾ Guardrails are qualified up to and included the listed maximum guardrail system dimensions for use in the referenced Code Occupancy Classification. Guardrail lengths are actual railings lengths, i.e. clear space between supports/posts for level rails, sloping length of rail between supports/posts for stair rails, and sloping length of rail between brackets for continuous stair rails.

⁽²⁾ Light Wall post is limited to use in IRC One- and Two-family Dwelling applications with a maximum rail height of 36 inches.

TABLE 8: FASTENING SCHEDULE – ALX CONTEMPORARY ROUND RAILING

GUARD TYPE	CONNECTION	FASTENER ⁽¹⁾
Level Application	Top Rail Bracket to Post	Two 1/4-14 x 1 in hex-head, self-drilling sheet metal screws
	Top Rail Bracket to Rail	Four #8-18 x 1-1/2 in flat-head, machine screws
	Bottom Rail Bracket to Post	Two 1/4-14 x 1 in hex-head, self-drilling sheet metal screws
	Bottom Rail Bracket to Rail	Two #8-18 x 1-1/2 in flat-head, machine screws
	Support Block / Nylon Connector to Bottom Rail	One #8-14 x 1 in flat head, machine screw
	Angle Bracket to Post	Two #10-16 by 1-inch, self-drilling stainless steel screws
	Angle Bracket to Rail	Two #10-16 by 1-inch, self-drilling stainless steel screws
Stair Application	Top Rail Bracket to Post	Two #10-32 x 1 in flat-head, self-drilling sheet metal screws
	Top Rail Bracket to Rail	Two #10-16 x 1 in pan-head, self-drilling sheet metal screws
	Bottom Rail Bracket to Post	Two #10-32 x 1 in flat-head, self-drilling sheet metal screws
	Bottom Rail Bracket to Rail	Two #10-16 x 1 in pan-head, self-drilling sheet metal screws
	Swivel to Collar	1/4-28 x 1 in button head socket cap screw
	Support Block / Nylon Connector to Bottom Rail	One #8-14 x 1 in flat head, machine screw

⁽¹⁾ All fasteners are 300 series stainless steel.





TABLE 9: FASTENING SCHEDULE – ALX CONTEMPORARY RECTANGULAR RAILING

GUARD TYPE	CONNECTION	FASTENER ⁽¹⁾
Level Application	Top Rail Bracket to Post	Two 1/4-14 x 1 in hex-head, self-drilling sheet metal screws
	Top Rail Bracket to Rail	Four #8-18 x 1-1/2 in flat-head, machine screws
	Over the Post Bracket to Post	Four 1/4-14 by 1" (0.182 in minor diameter), pan-head, self-drilling, galvanized carbon steel screws (installed in screw chases in post)
	Over the Post Bracket to Rail	Two #8-18 by 3/4" (0.122 in minor diameter), countersunk head, self-drilling, galvanized carbon steel screws
	Bottom Rail Bracket to Post	Two 1/4-14 x 1 in hex-head, self-drilling sheet metal screws
	Bottom Rail Bracket to Rail	Two #8-18 x 1-1/2 in flat-head, machine screws
	Support Block / Nylon Connector to Bottom Rail	One #8-18 x 1 in flat head, machine screw
	Angle Bracket to Post	Two #10-16 by 1-inch, self-drilling stainless steel screws
	Angle Bracket to Rail	Two #10-16 by 1-inch, self-drilling stainless steel screws
Stair Application	Top Rail Bracket to Post	Two #10-16 x 1 in countersunk head, self-drilling, stainless steel screws
	Top Rail Bracket to Rail	Two #10-16 x 1 in pan-head, self-drilling stainless steel screws
	Swivel Over the Post Bracket to Post	Four 1/4-14 by 1" (0.182 in minor diameter), pan-head, self-drilling, galvanized carbon steel screws (installed in screw chases in post)
	Swivel Over the Post Bracket to Rail	Two #8-18 by 3/4" (0.122 in minor diameter), countersunk head, self-drilling, galvanized carbon steel screws
	Bottom Rail Bracket to Post	Two #10-16 x 1 in countersunk head, self-drilling, stainless steel screws
	Bottom Rail Bracket to Rail	Two #10-16 x 1 in pan-head, self-drilling stainless steel screws
	Original Swivel to Collar	1/4-28 x 1 in button head socket cap screw Swivel secured using Barrel Bolt with 1/4-28 x 1 in button head socket cap screw
	Support Block / Nylon Connector to Bottom Rail	One #8-18 x 1 in countersunk head, self-drilling, stainless steel screw

⁽¹⁾ All fasteners are 300 series stainless steel.



TABLE 10: FASTENING SCHEDULE – ALX CONTEMPORARY CABLE RAILING

GUARD TYPE	CONNECTION	FASTENER ⁽¹⁾
Level Application	Top Rail Bracket to Post	Two 1/4-14 x 1 in hex-head, self-drilling sheet metal screws
	Top Rail Bracket to Rail	Four #8-18 x 1-1/2 in flat-head, machine screws
	Over the Post Bracket to Post	Four 1/4-14 by 1" (0.182 in minor diameter), pan-head, self-drilling, galvanized carbon steel screws (installed in screw chases in post)
	Over the Post Bracket to Rail	Two #8-18 by 3/4" (0.122 in minor diameter), countersunk head, self-drilling, galvanized carbon steel screws
	Bottom Rail Bracket to Post	Two 1/4-14 x 1 in hex-head, self-drilling sheet metal screws
	Bottom Rail Bracket to Rail	Two #8-18 x 1-1/2 in flat-head, machine screws
	Cable Infill Intermediate Picket / Nylon Connector to Top Rail and Deck Surface	One #8-18 by 1-inch, countersunk head, self-drilling stainless steel screw
	Cable Infill to Post	Pull-Lock® (Part No. PUL-4-12) fitting pulled through the width of the post to the opposite side, and tightened with brass lock nut and stainless-steel washer on threaded stud
Stair Application	Top Rail Bracket to Post	Two #10-16 x 1 in countersunk head, self-drilling, stainless steel screws
	Top Rail Bracket to Rail	Two #10-16 x 1 in pan-head, self-drilling stainless steel screws
	Swivel Over the Post Bracket to Post	Four 1/4-14 by 1" (0.182 in minor diameter), pan-head, self-drilling, galvanized carbon steel screws (installed in screw chases in post)
	Swivel Over the Post Bracket to Rail	Two #8-18 by 3/4" (0.122 in minor diameter), countersunk head, self-drilling, galvanized carbon steel screws
	Bottom Rail Bracket to Post	Two #10-16 x 1 in countersunk head, self-drilling, stainless steel screws
	Bottom Rail Bracket to Rail	Two #10-16 x 1 in pan-head, self-drilling stainless steel screws
	Original Swivel to Collar	1/4-28 x 1 in button head socket cap screw Swivel secured using Barrel Bolt with 1/4-28 x 1 in button head socket cap screw
	Cable Infill Intermediate Picket / Nylon Connector to Top Rail and Deck Surface	One #8-18 by 1-inch, countersunk head, self-drilling stainless steel screw
	Cable Infill to Post	Pull-Lock® (Part No. PUL-4-12) fitting pulled through the width of the post to the opposite side, and tightened with brass lock nut and stainless-steel beveled washer on threaded stud

⁽¹⁾ All stainless-steel fasteners are 300 series stainless steel.



TABLE 11: FASTENING SCHEDULE – REVOLUTION ROD RAILING

GUARD TYPE	CONNECTION	FASTENER ⁽¹⁾
Level Application	Top Rail Bracket to Post	Two #10-16 x 1 in. Torx-drive, flat-head, self-drilling screws
	Top Rail Bracket to Rail	Two #8-20 x 1/2 in. Torx-drive, flat-head, self-drilling screws
	Horizontal Picket to Side Channel	Slip fit rod rail connector shaft to side channel. Attach rod rail connector shaft to threaded rod of picket, secure with connector wrench.
	Horizontal Picket to Intermediate Baluster	Slip Fit
	Side Channel to Post	Six #10-16 x 1 in. Torx-drive, flat-head, self-drilling screws
	Intermediate Baluster to Top Rail	Nylon baluster plug attached to top rail with one #10-16 x 1 in. Torx-drive, flat-head, self-drilling screw
	Intermediate Baluster to Deck	Nylon baluster plug attached to deck with one #10-16 x 1 in. Torx-drive, flat-head, self-drilling screw
Stair Application	Top Rail Bracket to Post	Two #10-16 x 1 in. Torx drive, flat-head, self-drilling screws
	Top Rail Bracket to Rail	Two #10-16 x 1 in. Torx drive, flat-head, self-drilling screws
	Stair Bracket Socket to Swivel	One 1/4-28 by 1 in. square-drive, pan-head, machine screw
	Stair Bracket Hinged Connector	One 1-1/4 in. long 2-piece connector pin
	Horizontal Picket to Side Channel	Slip fit rod rail connector shaft to side channel. Attach rod rail connector shaft to threaded rod of picket, secure with connector wrench.
	Horizontal Picket to Intermediate Baluster	Slip Fit
	Side Channel to Post	Six #10-16 x 1 in. Torx drive, flat-head, self-drilling screws
	Intermediate Baluster to Top Rail	Nylon baluster plug attached to top rail with one #10-16 x 1 in. Torx-drive, flat-head, self-drilling screw
	Intermediate Baluster to Deck	Nylon baluster plug attached to deck with one #10-16 x 1 in. Torx-drive, flat-head, self-drilling screw

⁽¹⁾ All stainless-steel fasteners are 300 series stainless steel.



TABLE 12: FASTENING SCHEDULE – RAPID RAIL

GUARD TYPE	CONNECTION	FASTENER ⁽¹⁾
Level Application	Top Rail Bracket to Post	Two #10-16 by 1 in. star drive, countersunk head, self-drilling stainless steel screws
	Top Rail Bracket to Rail	Two #8-18 by ½ in. star drive, countersunk head, self-drilling, stainless steel screws
	Bottom Rail Bracket to Post	Two #10-16 by 1 in. star drive, countersunk head, self-drilling stainless steel screws
	Bottom Rail Bracket to Rail	Two #8-18 by ½ in. star drive, countersunk head, self-drilling, stainless steel screws
	Support Block / Nylon Connector to Bottom Rail	One #8-18 by 1 in. square drive, countersunk head, self-drilling, stainless steel screw
	Support Block / Nylon Connector to Support Block	Slip fit – no mechanical connection
	Baluster to Top/Bottom Rail	Slip fit – no mechanical connection
Stair Application	Top Rail Bracket to Post	Two #10-16 by 1 in. star drive, countersunk head, self-drilling stainless steel screws
	Top Rail Bracket to Rail	Two #8-18 by ½ in. star drive, countersunk head, self-drilling, stainless steel screws
	Bottom Rail Bracket to Post	Two #10-16 by 1 in. star drive, countersunk head, self-drilling stainless steel screws
	Bottom Rail Bracket to Rail	Two #8-18 by ½ in. star drive, countersunk head, self-drilling, stainless steel screws
	Continuous Stair Bracket to Post	Four ¼-20 x ¾ in. star drive, pan-head, thread-forming, stainless steel screws into post screw chases
	Continuous Stair Bracket to Rail	Two #8-18 by ½ in. star drive, countersunk head, self-drilling, stainless steel screws
	Support Block / Nylon Connector to Bottom Rail	One #8-18 by 1 in. square drive, countersunk head, self-drilling, stainless steel screw
	Support Block / Nylon Connector to Support Block	Slip fit – no mechanical connection
	Baluster to Top/Bottom Rail	Slip fit – no mechanical connection
	Top Stair Rail Bracket Base to Bracket Mount	One #10-16 by 1 in. star drive, countersunk head, self-drilling, stainless steel screw
	Bottom Stair Rail Bracket Base to Bracket Mount	One #10-16 by 1 in. star drive, countersunk head, self-drilling, stainless steel screw
	Continuous Stair Bracket Base to Bracket Mount	Two ¼-20 x ½ in. countersunk head stainless steel machine screws

⁽¹⁾ All stainless-steel fasteners are 300 series stainless steel.





TABLE 13: FASTENING SCHEDULE – PALISADE

GUARD TYPE	CONNECTION	FASTENER ⁽¹⁾
Level Application	Top Rail Bracket to Post	Two #10 by ½ in (0.135 in minor diameter) torx drive, pan-head, self-drilling, stainless steel screws
	Top Rail Bracket to Rail	Two #10 by ½ in (0.135 in minor diameter) torx drive, pan-head, self-drilling, stainless steel screws
	Bottom Rail Bracket to Post	Two #10 by ½ in (0.135 in minor diameter) torx drive, pan-head, self-drilling, stainless steel screws
	Bottom Rail Bracket to Rail	Two #10 by ½ in (0.135 in minor diameter) torx drive, pan-head, self-drilling, stainless steel screws
	Support Block / Nylon Connector to Bottom Rail	One #8 by 1 in (0.117 in minor diameter) torx drive, pan-head, self-drilling, stainless steel screw
	Support Block / Nylon Connector to Deck	One #8 by 1 in (0.117 in minor diameter) torx drive, pan-head, self-drilling, stainless steel screw
	Baluster to Top/Bottom Rail	Slip fit – no mechanical connection
Stair Application	Top Rail Bracket to Post	Two #10 by ½ in (0.135 in minor diameter) torx drive, pan-head, self-drilling, stainless steel screws
	Top Rail Bracket to Rail	Two #10 by ½ in (0.135 in minor diameter) torx drive, pan-head, self-drilling, stainless steel screws
	Bottom Rail Bracket to Post	Two #10 by ½ in (0.135 in minor diameter) torx drive, pan-head, self-drilling, stainless steel screws
	Bottom Rail Bracket to Rail	Two #10 by ½ in (0.135 in minor diameter) torx drive, pan-head, self-drilling, stainless steel screws
	Support Block / Nylon Connector to Bottom Rail	One #8 by 1 in (0.117 in minor diameter) torx drive, pan-head, self-drilling, stainless steel screw
	Support Block / Nylon Connector to Deck	One #8 by 1 in (0.117 in minor diameter) torx drive, pan-head, self-drilling, stainless steel screw
	Baluster to Top/Bottom Rail	Slip fit – no mechanical connection

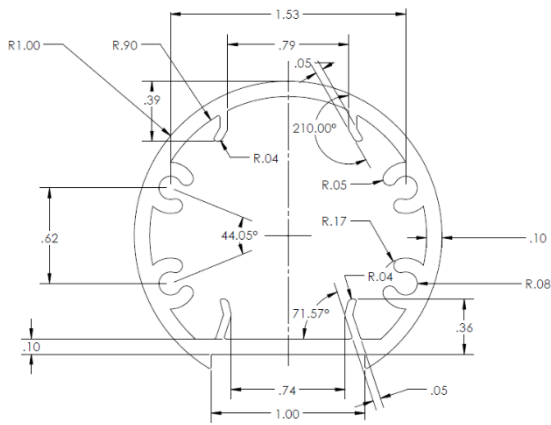


FIGURE 1 – ALX ROUND TOP RAIL

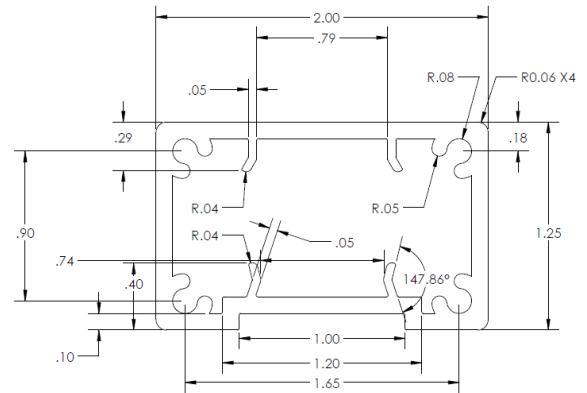


FIGURE 2 – ALX RECTANGULAR TOP RAIL

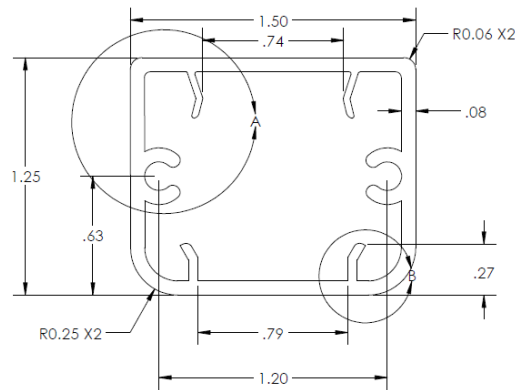
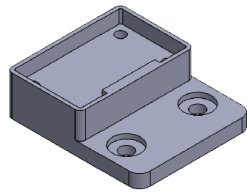
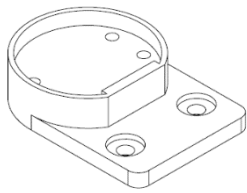
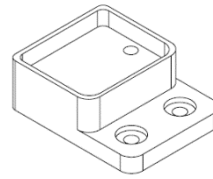


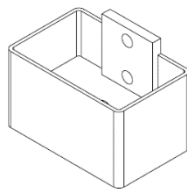
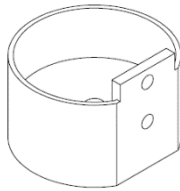
FIGURE 3 – ALX SQUARE BOTTOM RAIL



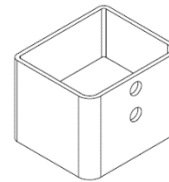
**ALX Level Round and Rectangular
Top Rail Brackets**



**ALX Level Square
Bottom Rail Bracket**



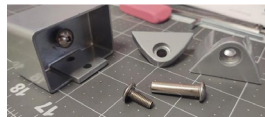
ALX Stair Round and Rectangular Top Rail Brackets



ALX Stair Bottom Rail Bracket

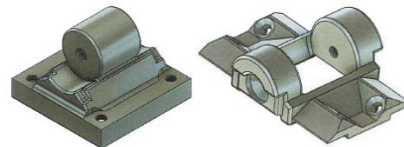


Bracket

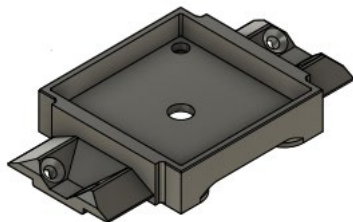


Fasteners

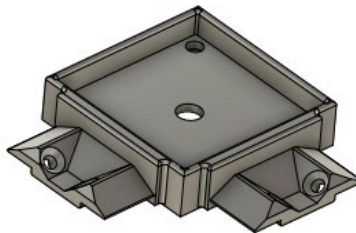
**Original ALX Swivel Bracket for Stair Assembly
and 22.5° To 45° Angle Brackets for Level Assemblies**



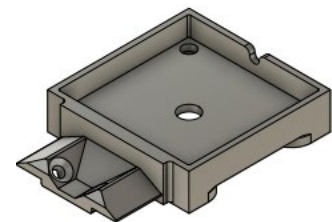
**Over The Top ALX Swivel Bracket
for Stairs Only**



Continuous (Level/In-Line)



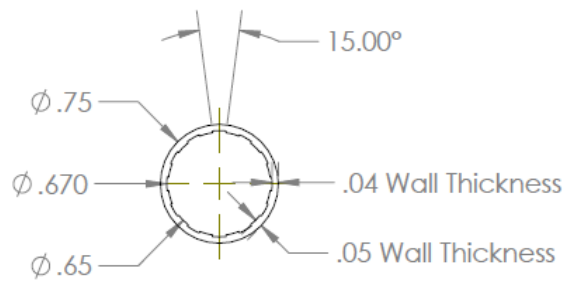
Corner



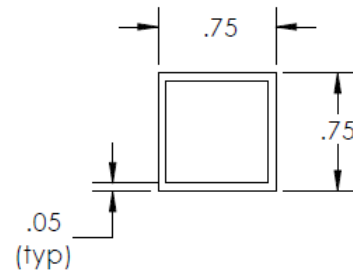
End

Over The Post ALX Rectangular Bracket

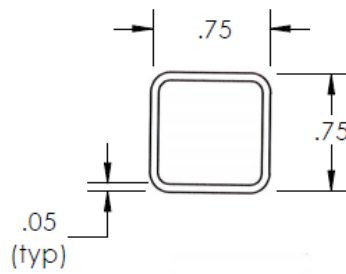
FIGURE 4 – ALX RAIL BRACKETS



Classic 3/4 inch Dia. Picket Profile



Estate 3/4 inch Square Picket Profile



Welded to Rails, 3/4-inch Square Picket Profile

FIGURE 5 – ALX PICKET INFILL

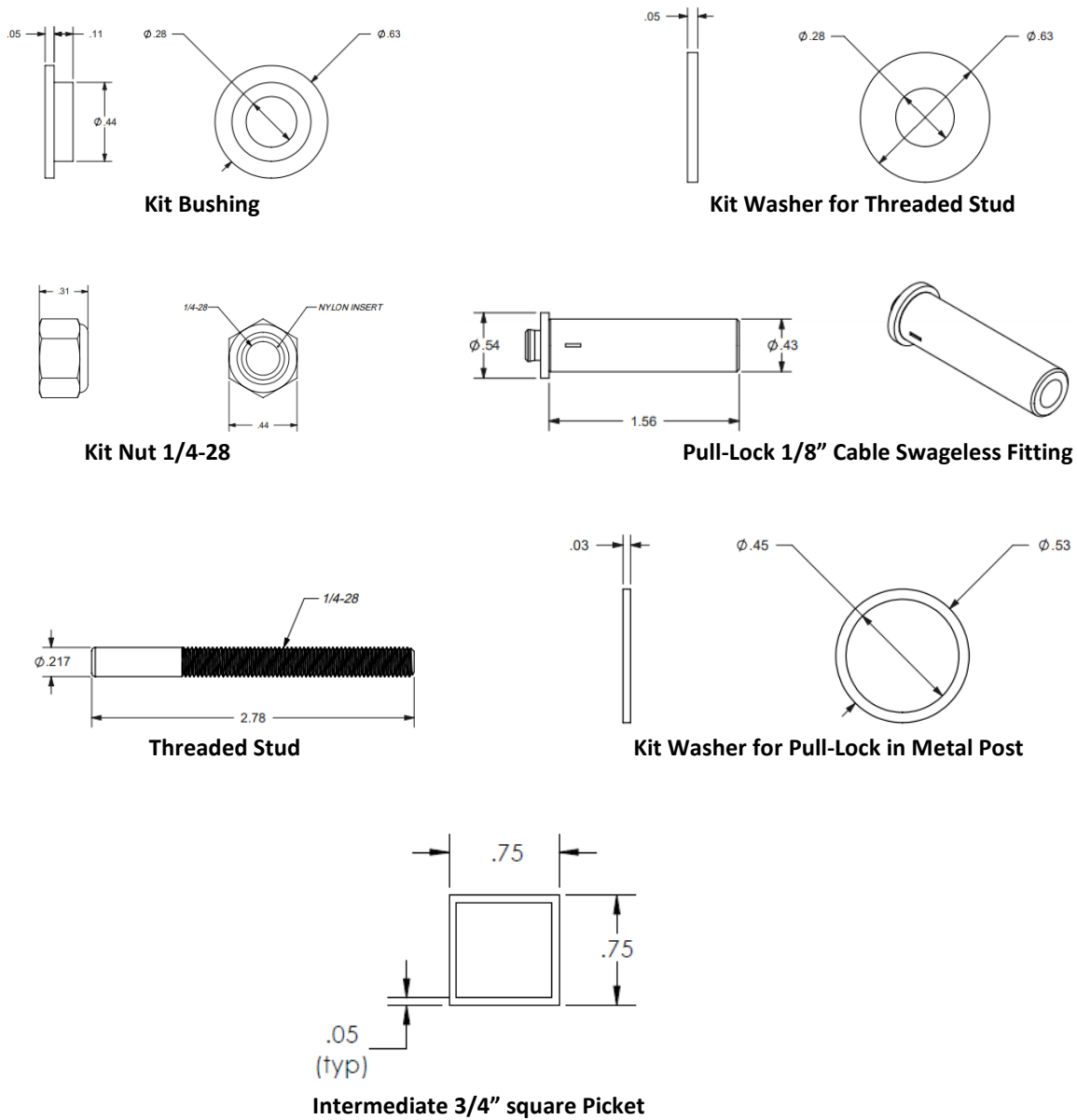


FIGURE 6 – ALX CABLE RAIL INFILL COMPONENTS

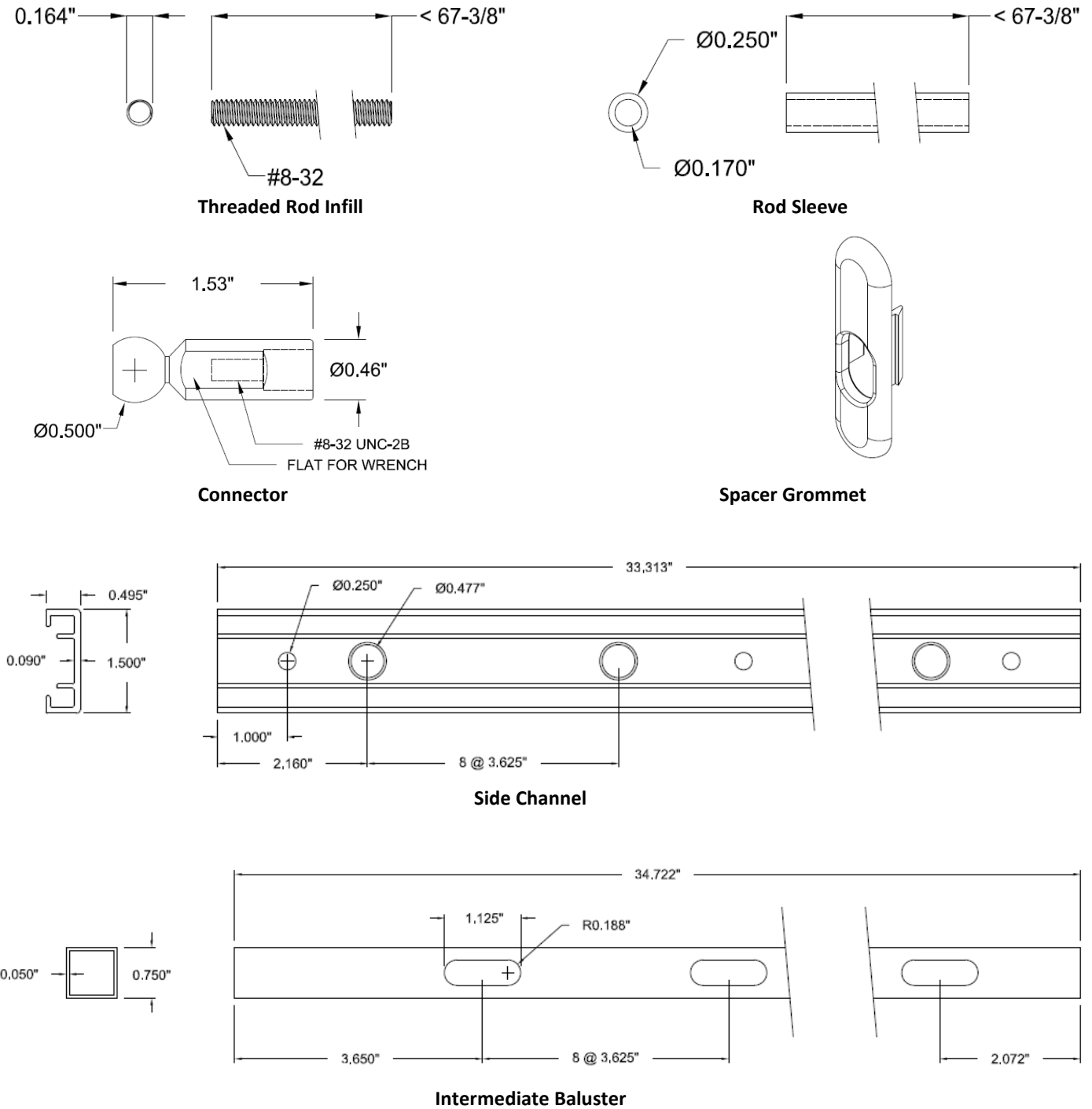
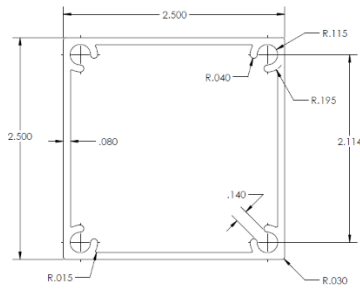
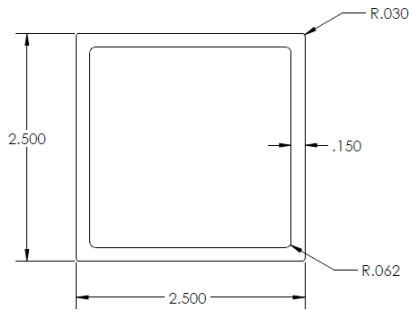


FIGURE 7 – REVOLUTION ROD INFILL COMPONENTS

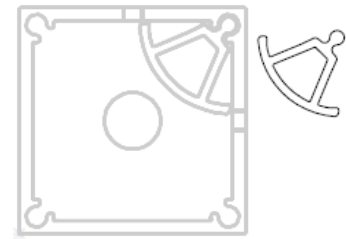




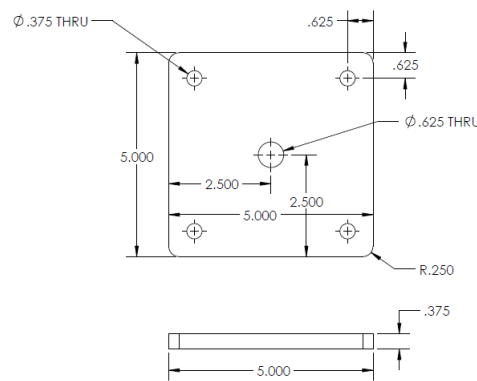
Light Wall Post



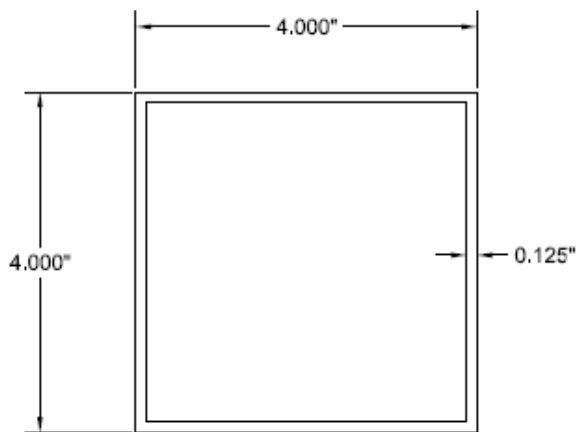
Heavy Wall Post



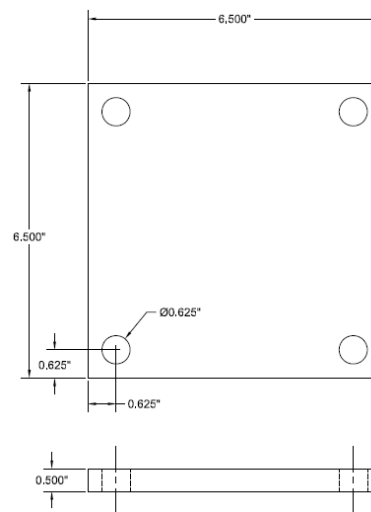
Heavy Wall Post with Cable Corner



Light Wall, Heavy Wall and Heavy Wall with Cable Corner Post Base Plate



4x4 Post



4x4 Post Base Plate

FIGURE 8 – SUPPORT POSTS



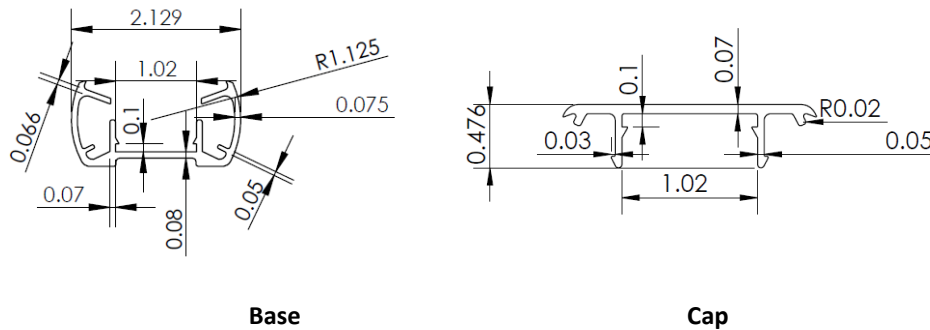


FIGURE 9 – RAPID RAIL TOP AND BOTTOM RAIL

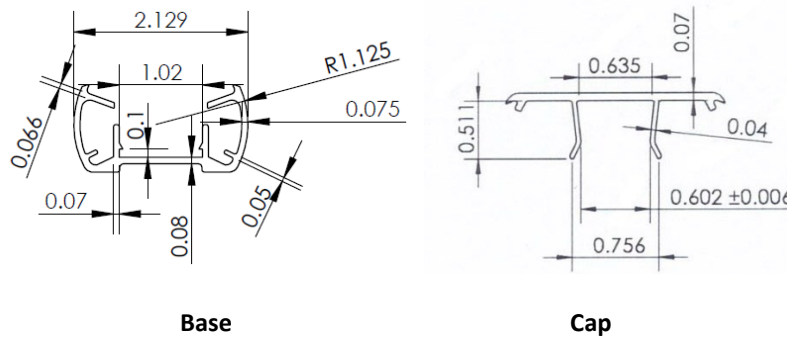


FIGURE 10 – PALISADE TOP RAIL

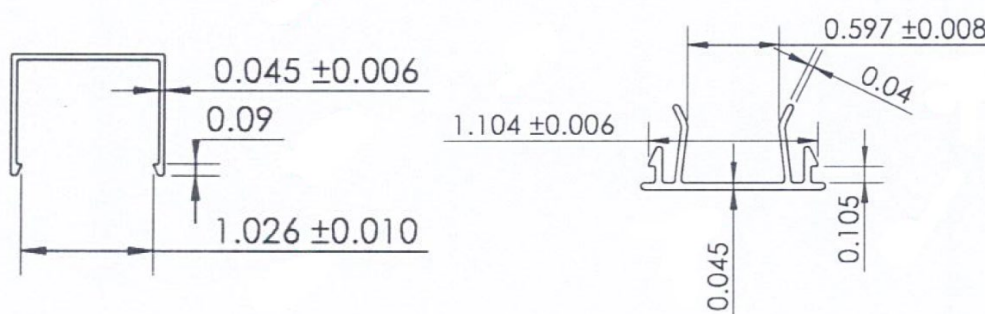
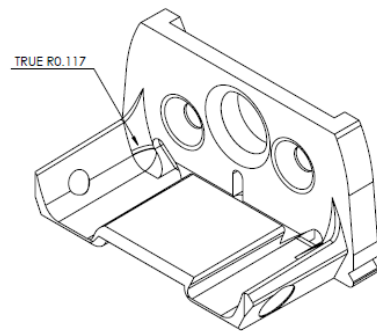
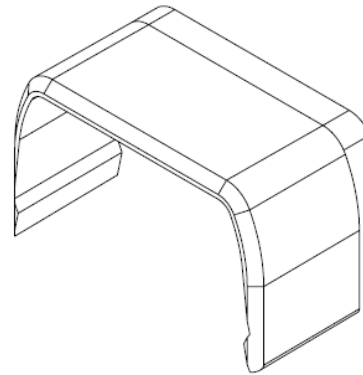


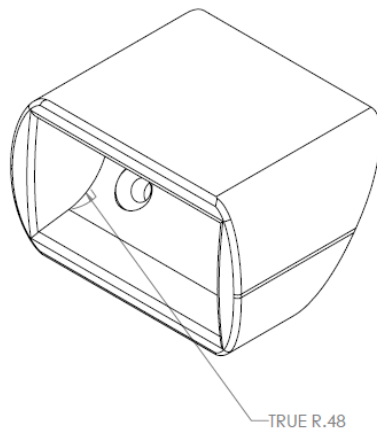
FIGURE 11 – PALISADE BOTTOM RAIL



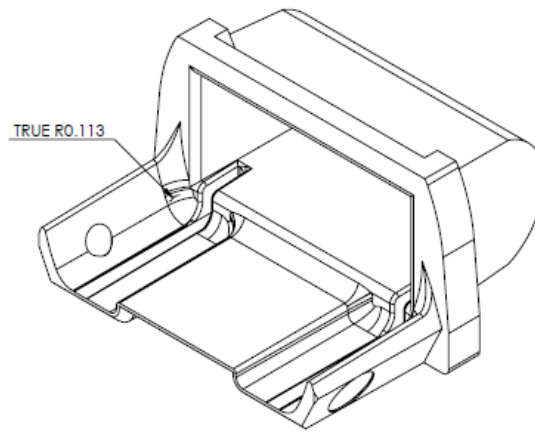
Base Bracket



Bracket Cap

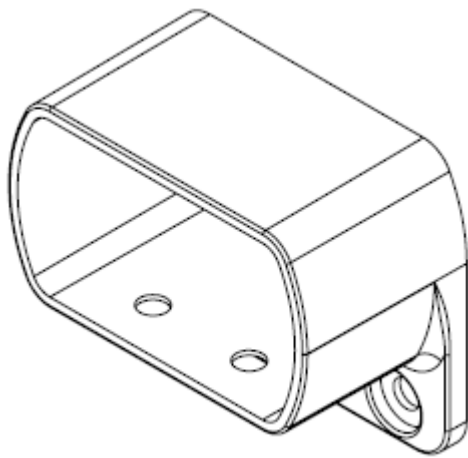


Stair Bracket Mount

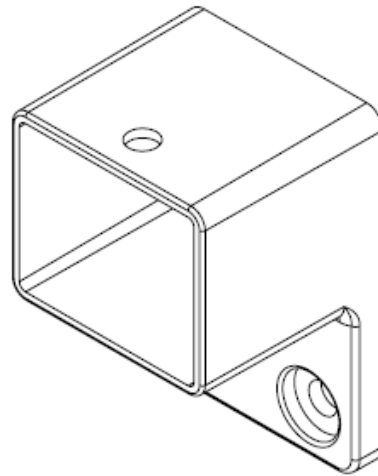


Stair Bracket Base

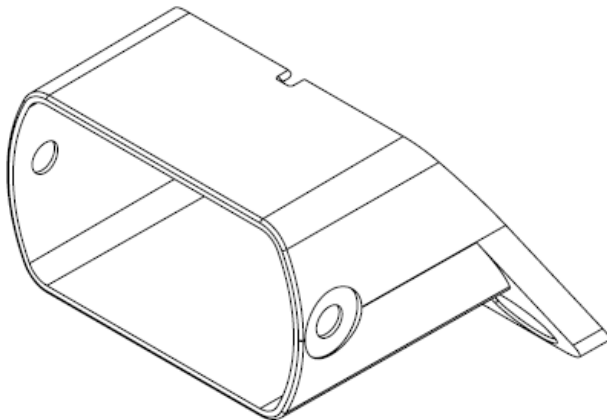
FIGURE 12 – RAPID RAIL BRACKETS



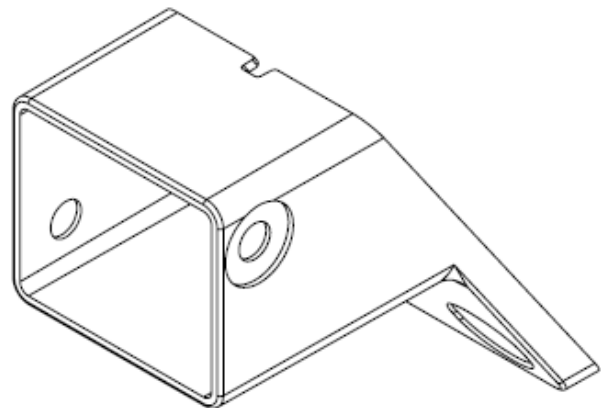
LEVEL: TOP RAIL BRACKET



LEVEL: BOTTOM RAIL BRACKET



STAIR: TOP RAIL BRACKET



STAIR: BOTTOM RAIL BRACKET

FIGURE 13 – PALISADE RAIL BRACKETS

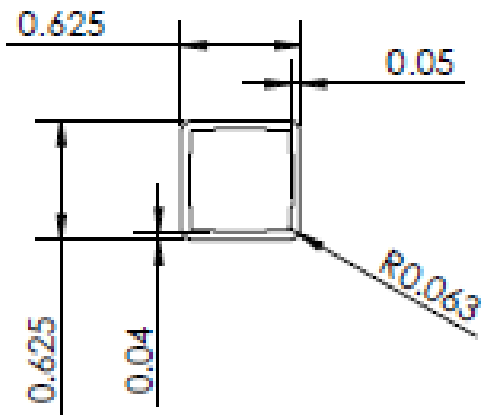


FIGURE 14 – RAPID RAIL/PALISADE 5/8" BALUSTER

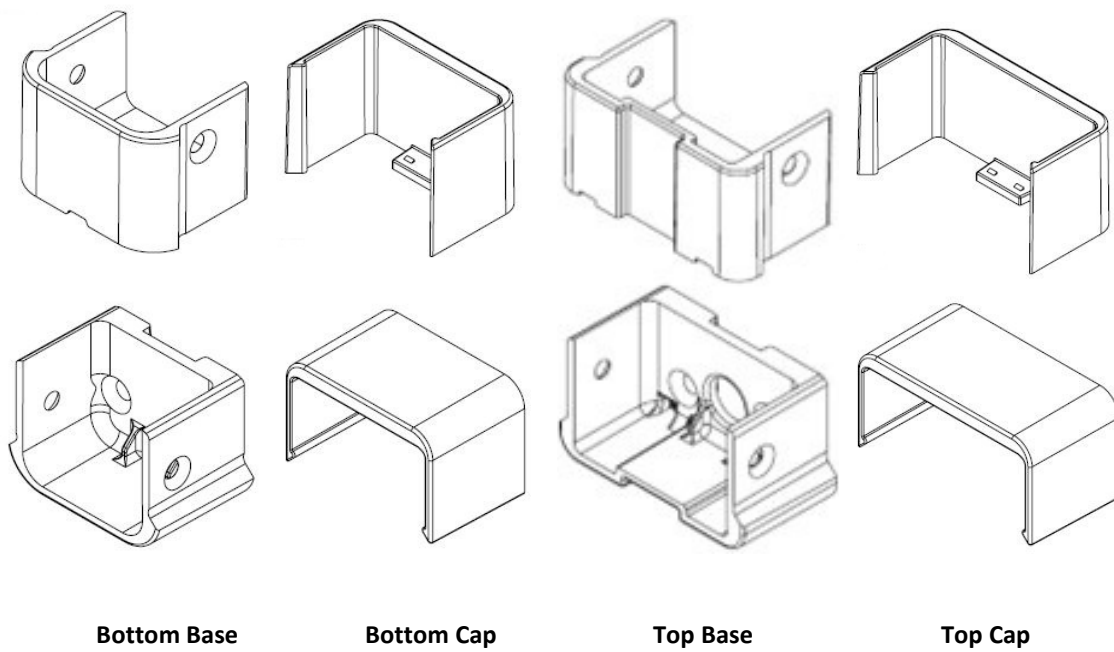


FIGURE 15 – 2-PIECE ALX CONTEMPORARY BRACKET

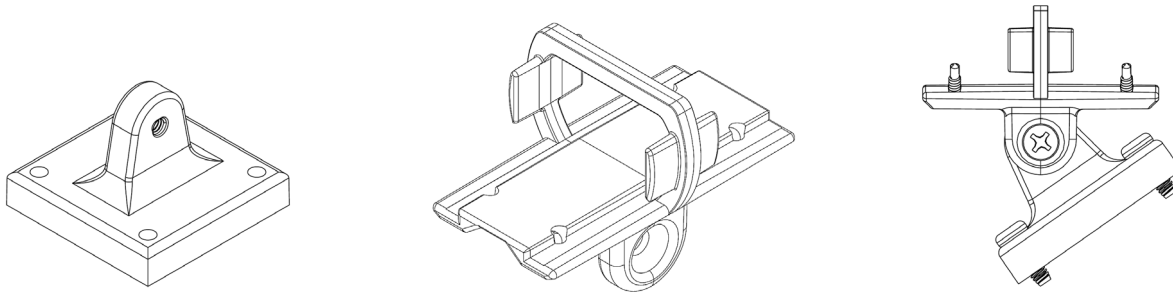


FIGURE 16 – RAPID RAIL CONTINUOUS STAIR BRACKET